



Willow Lake Reservoir

CITY OF **PRESCOTT**
ARIZONA

Water Resources

NAMWUA Board
October 15, 2021

Basic Information

City population (2020 Census) –
45,827

Water customers (2020 billing
accounts) – 24,664

Water demand (2020 potable
demand) – 6,826.72 AF

Supply types: Groundwater,
surface water (recharge only), and
reclaimed effluent (recharge or
direct delivery only)



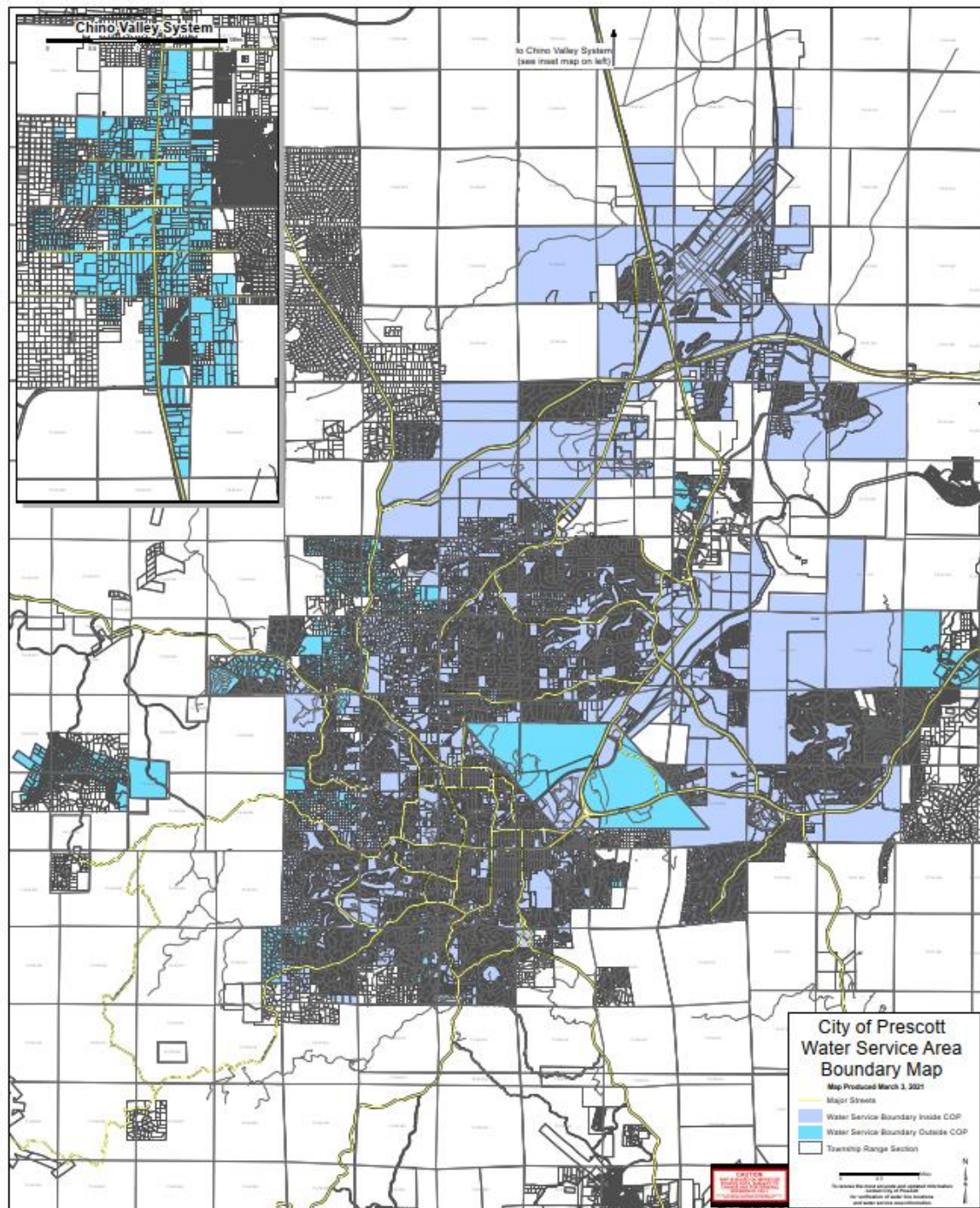
City Recharge Facility



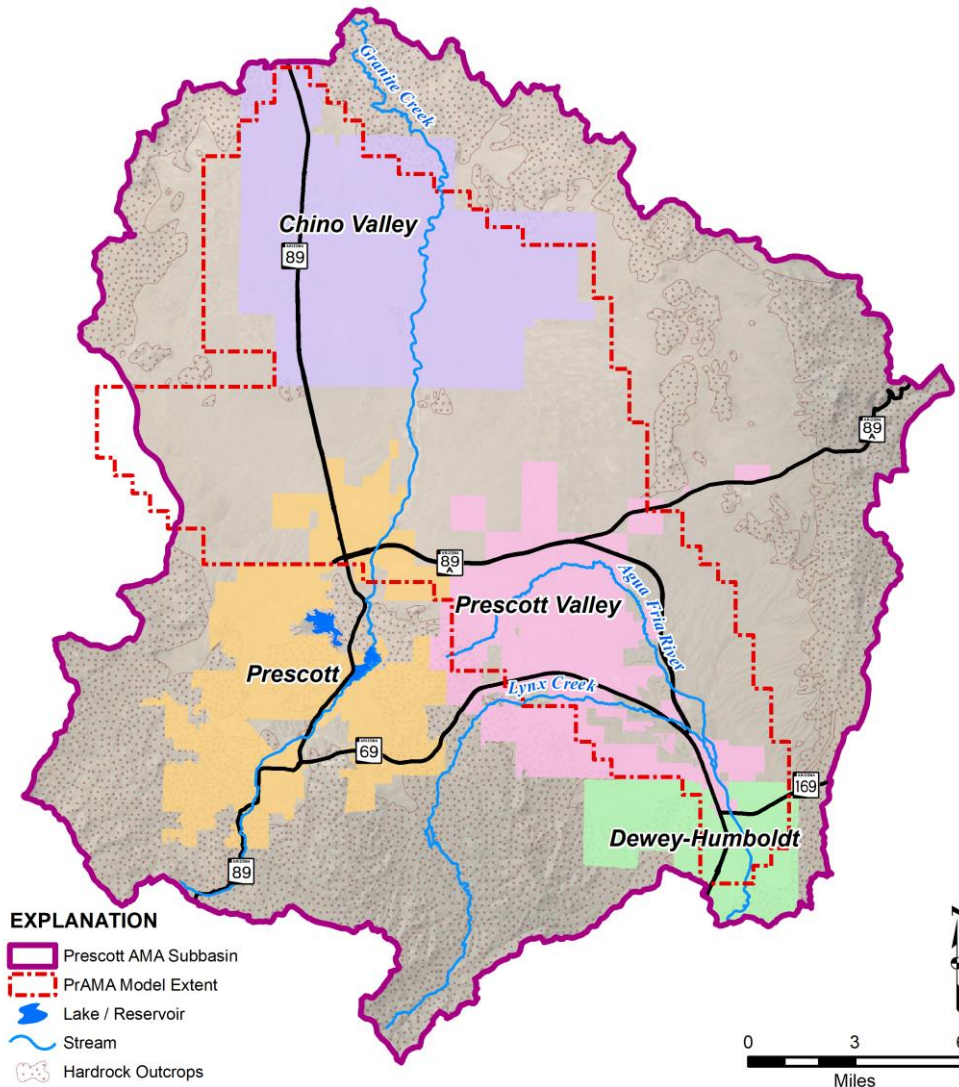
City water customer with artificial grass

City limits and Water Service Area

- Inside City Limits
- Outside of City limits, including Yavapai-Prescott Indian Tribe, and portions of Town of Chino Valley and unincorporated Yavapai County



Prescott Active Management Area



The Prescott Active Management Area (PrAMA) encompasses 485 square miles of Yavapai County, which contains Prescott, Prescott Valley, Chino Valley, Dewey-Humboldt, and portions of unincorporated Yavapai County.

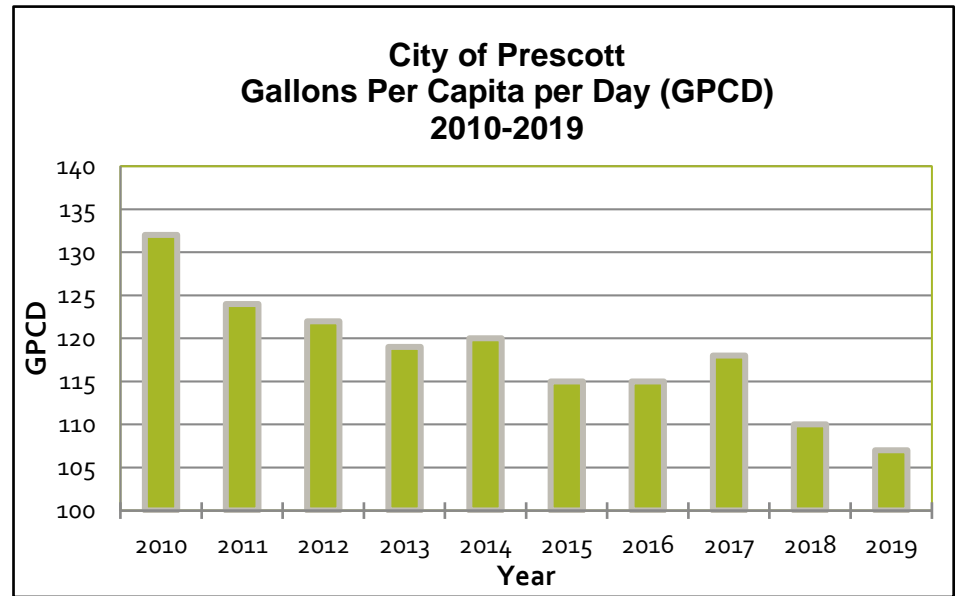
The PrAMA is regulated by the State; the City of Prescott has no regulatory authority over the PrAMA or the aquifers it contains.

Conservation

City Conservation Codes

ADWR Regulatory requirements (Gallons Per Capita per Day)

Customer water rebate program



Contact Us



Watson Lake

City of Prescott
Public Works Department
433 N. Virginia Street
928-777-1130

Board Representative: Councilman Blair

TAC Representative: Leslie Graser
leslie.graser@prescott-az.gov
928-777-1144

