



Water Resources

NAMWUA Board
October 15, 2021

Basic Data

Town population (2020 Census)
– 12,000

Water customers (2020 billing
accounts) – 938

Sewer Customers – 2,223 –
316.54 AF

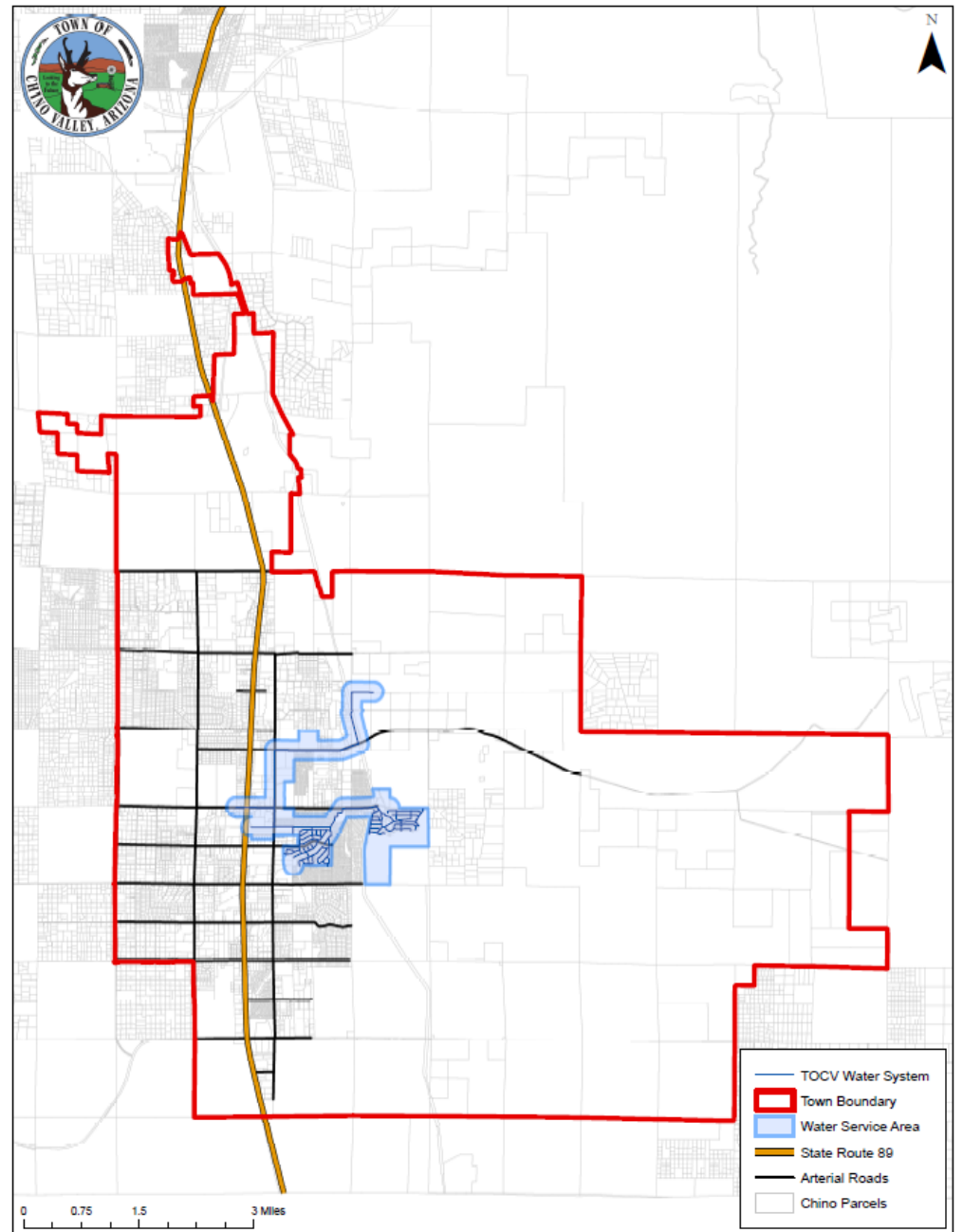
Water demand (2020 potable
demand) – 294.7 AF

Supply types: Groundwater, and
reclaimed effluent (for recharge
and Indirect Potable Reuse
(IPR)).

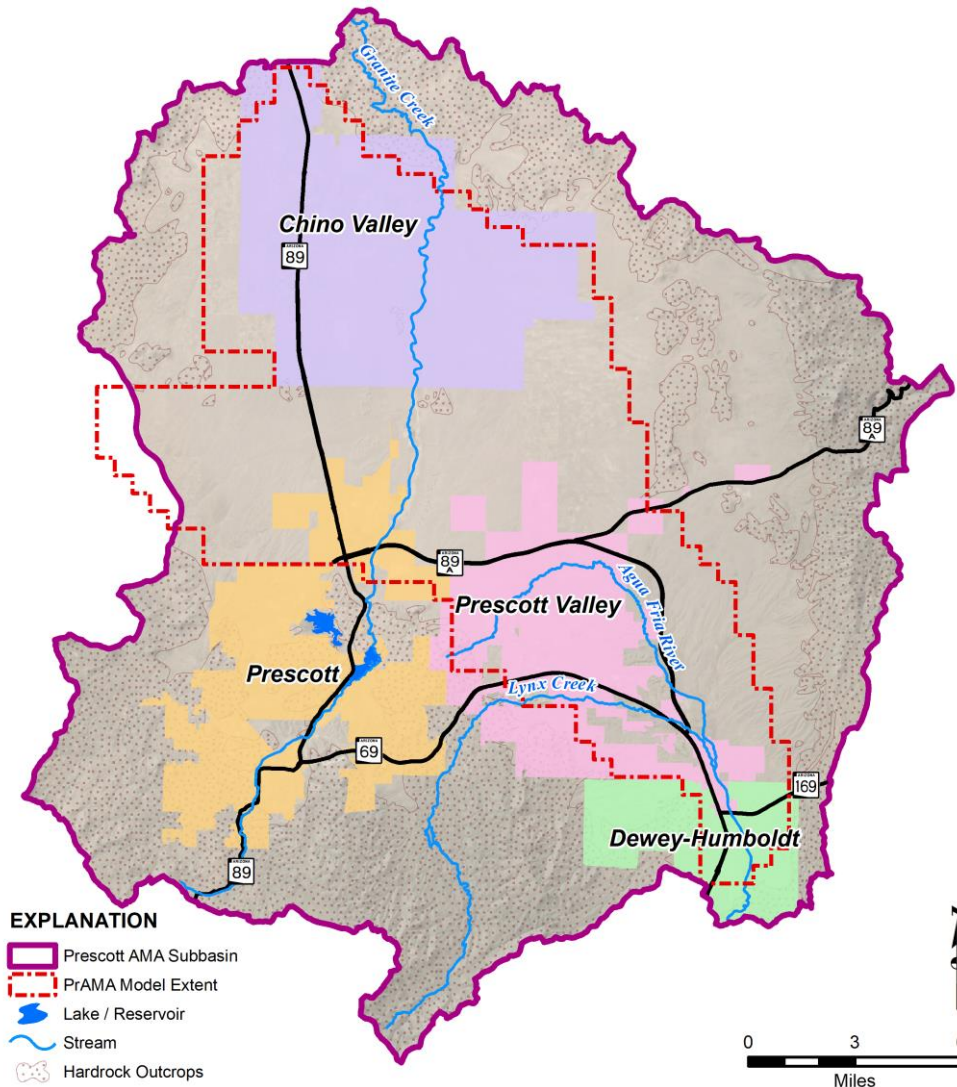


Map – Town limits and Water Service Area

- Town Limits
- Water Service Area



Regulatory – Prescott AMA

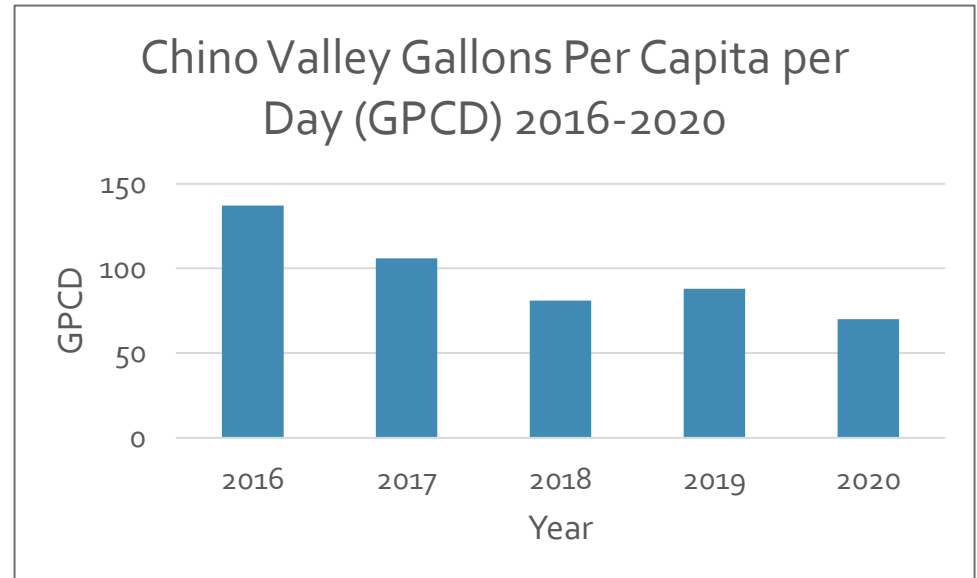


The Prescott Active Management Area (PrAMA) encompasses 485 square miles of Yavapai County, which contains Prescott, Prescott Valley, Chino Valley, Dewey-Humboldt, and portions of unincorporated Yavapai County. **The PrAMA is regulated by the State;** the City of Prescott has no jurisdiction over the PrAMA or the aquifers it contains.

Conservation

Town Conservation Ordinances

ADWR Regulatory requirements (Gallons Per Capita per Day)



Contact Us



Town of Chino Valley
Public Works Department
1020 West Palomino
928-636-7140
www.chinoaz.net

Board Representative: Mayor
Miller

TAC Representative: Mark
Holmes
Mark.holmes.llc@gmail.com
928-277-5253

